



**India Meteorological Department
(Ministry of Earth Sciences)**

NATIONAL BULLETIN NO. 10 (BoB/04/2025)

TIME OF ISSUE: 0200 HOURS IST

DATED: 27.07.2025

FROM: INDIA METEOROLOGICAL DEPARTMENT (FAX NO. 24643965/24699216/24623220)

TO: CONTROL ROOM, NDM, MINISTRY OF HOME AFFAIRS (FAX.NO. 23093750)

CONTROL ROOM NDMA (FAX.NO. 26701729)

CABINET SECRETARIAT (FAX.NO.23012284, 23018638)

PS TO HON'BLE MINISTER FOR S & T AND EARTH SCIENCES (FAX NO.23316745)

SECRETARY, MOES (FAX NO. 24629777)

H.Q. (INTEGRATED DEFENCE STAFF AND CDS) (FAX NO. 23005137/23005147)

DIRECTOR GENERAL, DOORDARSHAN (23385843)

DIRECTOR GENERAL, AIR (23421105, 23421219)

PIB MOES (FAX NO. 23389042)

UNI (FAX NO. 23355841)

D.G. NATIONAL DISASTER RESPONSE FORCE (NDRF) (FAX NO. 26105912, 2436 3260)

DIRECTOR, PUNCTUALITY, INDIAN RAILWAYS (FAX NO. 23388503)

CHIEF SECRETARY, ODISHA (FAX NO. 0674-2536660)

CHIEF SECRETARY, WEST BENGAL (FAX NO. 033-22144328)

CHIEF SECRETARY, GOVT. OF BIHAR (FAX NO. 0612-2217085)

CHIEF SECRETARY, GOVT. OF JHARKHAND (FAX NO. 0651-2400255)

CHIEF SECRETARY, GOVT. OF CHHATTISGARH (FAX NO. 0771-2221206)

CHIEF SECRETARY, GOVT. OF MADHYA PRADESH (FAX NO. 0755-2551521)

CHIEF SECRETARY, GOVT. OF UTTAR PRADESH (FAX NO. 0522-2239283)

CHIEF SECRETARY, GOVT. OF MAHARASHTRA (FAX NO. 022-22028594)

CHIEF SECRETARY, GOVT. OF RAJASTHAN (FAX NO. 0141-2227114)

CHIEF SECRETARY, GOVT. OF GUJARAT (FAX NO. 079-23250305)

Subject: Depression over east Madhya Pradesh and adjoining north Chhattisgarh

The Depression over east Madhya Pradesh and north Chhattisgarh moved nearly westwards with a speed of 12 kmph during past 6 hours and lay centred at 2330 hrs IST of today, the 26th July over the same region, near Lat. 23.3°N and Long. 81.0°E, about 30 km south-southeast of Umari (Madhya Pradesh), 110 km east of Jabalpur (Madhya Pradesh) and 170 km east-southeast of Damoh (Madhya Pradesh).

It is very likely to continue to move nearly westwards across Madhya Pradesh and weaken gradually into a well-marked low pressure area by tomorrow, the 27th July, 2025.

Warnings:

(i) Rainfall Warning:

Chhattisgarh: Light to moderate rainfall at most places with **heavy rainfall** at isolated places over north Chhattisgarh on 27th-28th July.

East Madhya Pradesh: Light to moderate rainfall at most places with **heavy to very heavy rainfall** at isolated places **is very likely** during 27th – 28th July.

West Madhya Pradesh: Light to moderate rainfall at most places with **heavy to very heavy rainfall** at isolated places **is very** likely during 27th – 28th July with **extremely heavy rainfall (≥ 21 cm)** on 27th July.

Vidarbha: Light to moderate rainfall at most places with **heavy rainfall** at isolated places on 27th July.

Madhya Maharashtra: Light to moderate rainfall at most places with **heavy to very heavy rainfall** at isolated places **is very** likely during 27th – 28th July.

Gujarat region: Light to moderate rainfall at most places with **heavy to very heavy rainfall** at isolated places **is very** likely during 27th – 28th July with **extremely heavy rainfall (≥ 21 cm)** on 27th July.

East Rajasthan: Light to moderate rainfall at most places with **heavy to very heavy rainfall** at isolated places **is very** likely during 27th – 28th July with **extremely heavy rainfall (≥ 21 cm)** on 27th & 28th July.

West Rajasthan: Light to moderate rainfall at most places with **heavy rainfall** at isolated places is very likely on 27th July.

(ii) Wind Warning:

Squally wind speed reaching 30-40 kmph gusting to 50 kmph is likely to prevail over Chhattisgarh, north Madhya Pradesh and adjoining southeast Uttar Pradesh during next 24 hours.

(ii) Impact Expected and Action Suggested due to heavy rainfall (Chhattisgarh, Madhya Pradesh, Vidarbha, Madhya Maharashtra,) and squally winds (Chhattisgarh, north Madhya Pradesh & adjoining southeast Uttar Pradesh)

Impact expected:

- ❖ Breaking of tree branches, uprooting of small trees like banana, papaya, drum sticks. Strong wind and rain may damage plantation, horticulture and standing crops.
- ❖ Partial damage to vulnerable structures due to strong winds and rain.
- ❖ Minor damage to kutchha houses/walls, huts and roads due to heavy rain.
- ❖ Road and rail traffic may be affected due to heavy rain and squally winds.
- ❖ There could be localised landslides, mudslides, landslips, water logging, inundation and flooding over low lying areas.
- ❖ Occasional reduction in visibility due to heavy rainfall.
- ❖ Helicopter services may get affected.

Action suggested:

- ❖ People are advised to keep a watch on the weather for worsening conditions and be ready to move to safer places accordingly.
- ❖ Take safe shelters; do not take shelter under trees, as there could be lightning.
- ❖ In case of expected lightning, unplug electrical/ electronic appliances, immediately, get out of water bodies and keep away from all the objects that conduct electricity.
- ❖ Tourism and recreational activities to be regulated.
 - ❖ Helicopter services to be regulated.

Significant rainfalls accumulated from 0830 hrs IST to 1730 hrs IST of today, the 26th July, 2025 are given in Annexure-I

Next bulletin will be issued at 0830 hours IST of today, the 27th July, 2025.

(Umasankar Das)
Scientist D, NWFC
IMD New Delhi

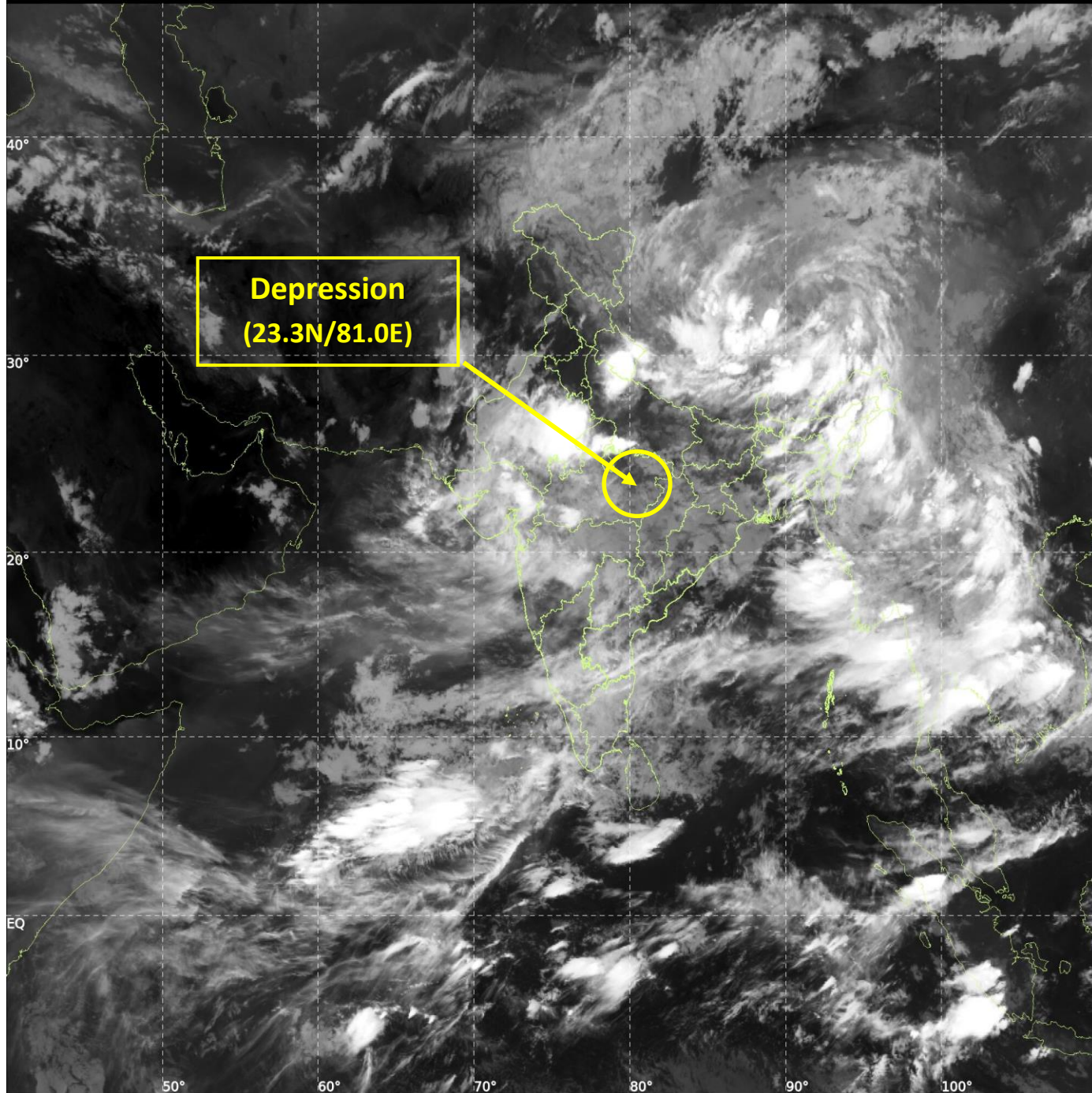
Copy to: ACWC Kolkata /CWC Bhubaneswar/CWC Ahmedabad/Meteorological Centres- Ranchi, Raipur, Bhopal, Lucknow, Jaipur, Mumbai, Nagpur



INSAT-3DS IMG, Thermal Infrared1 Count @ 10.83 μm
GMT:26-07-2025/(1930-1957) IST:27-07-2025/(0100-0127)
L1C MERCATOR (LINEAR STRETCH: 1%)

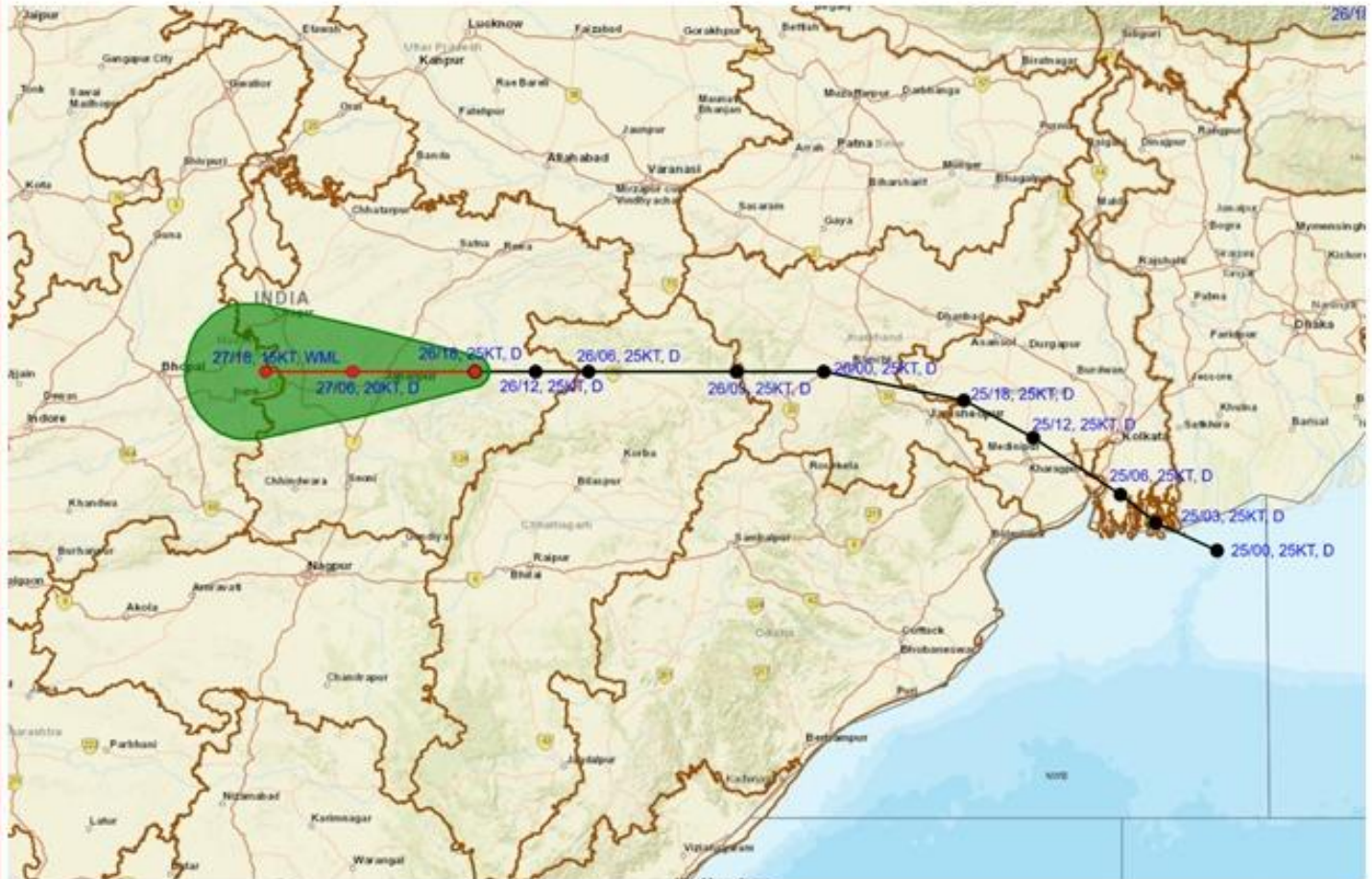
481

914





OBSERVED AND FORECAST TRACK OF DEPRESSION OVER EAST MADHYA PRADESH AND ADJOINING NORTH CHHATTISGARH AT 2330 HRS. IST (1800 UTC) OF 26th JULY 2025

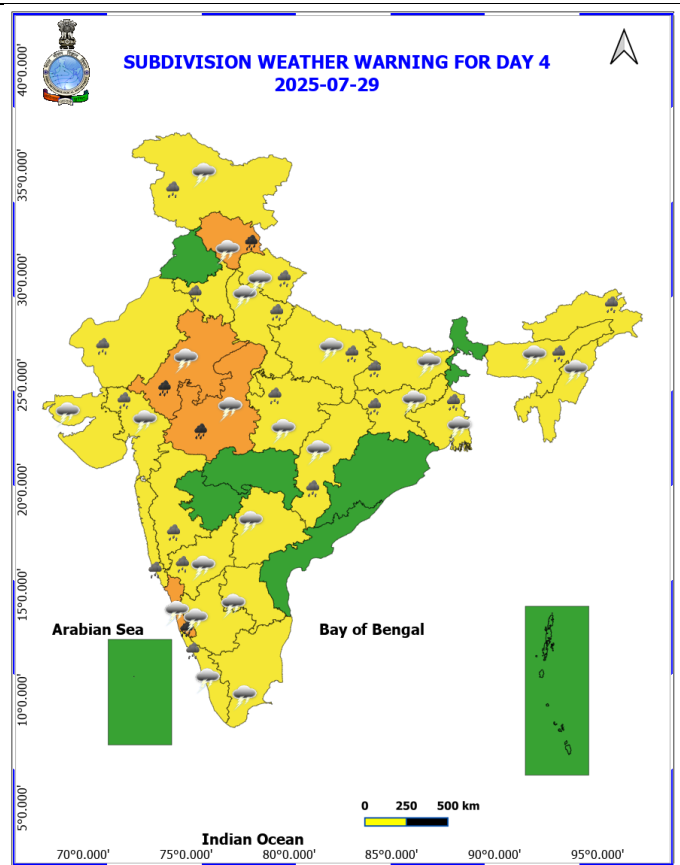
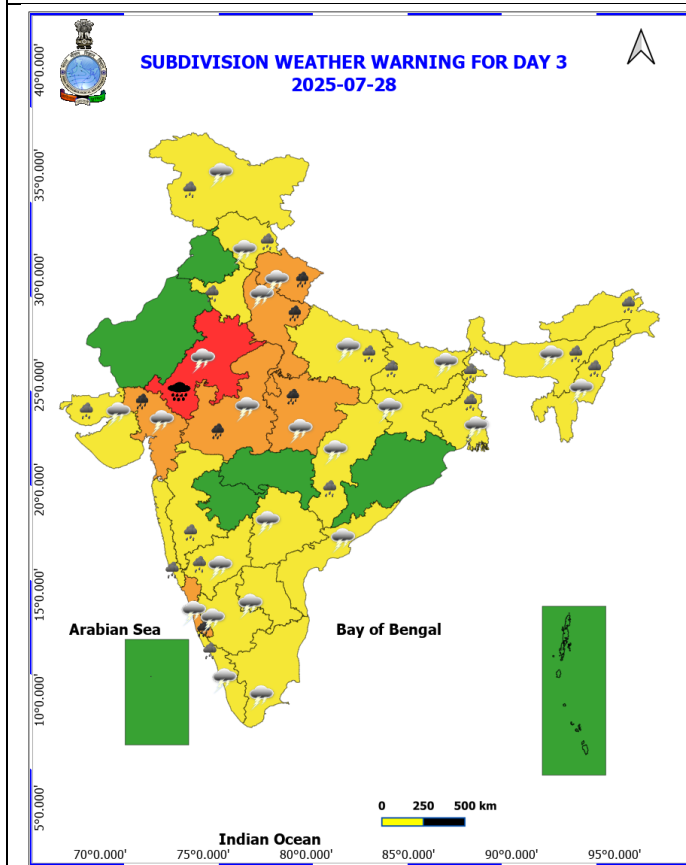
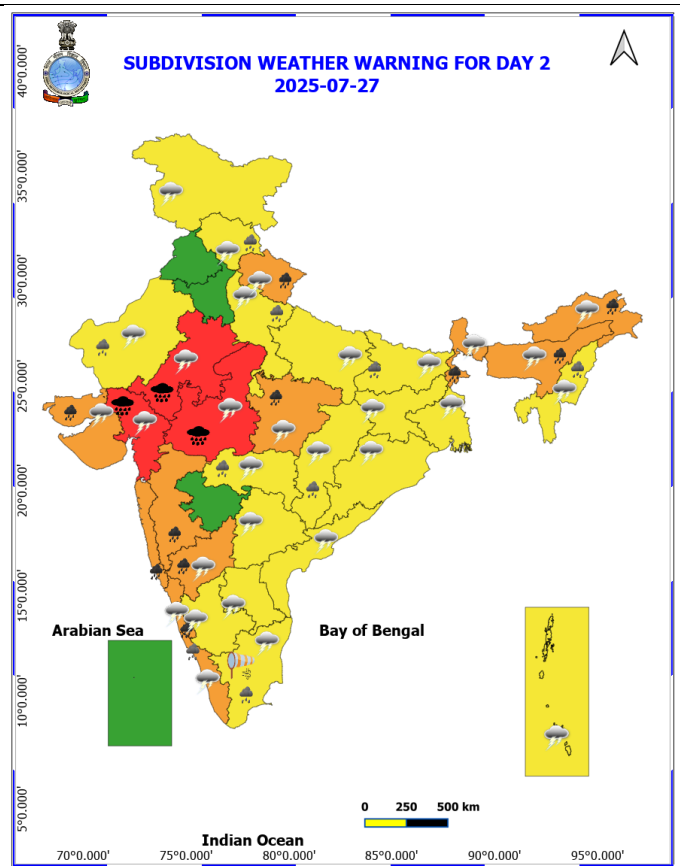
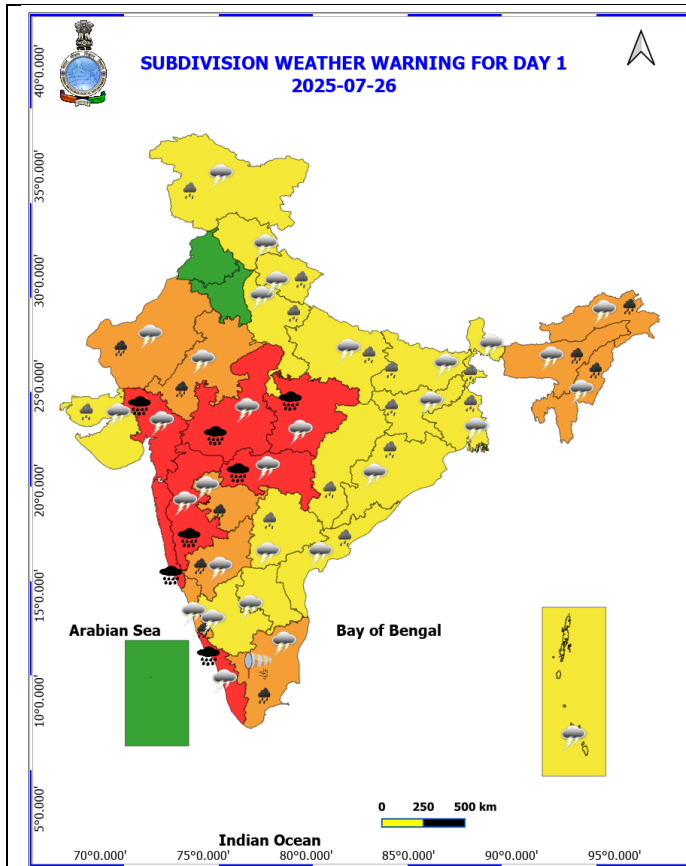


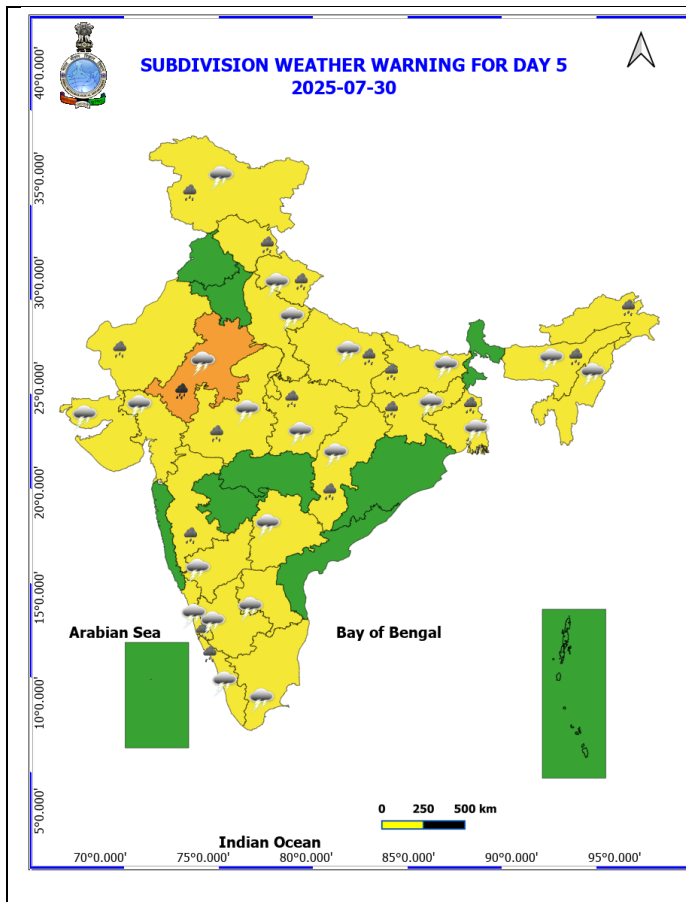
DATE/TIME IN UTC
 IST=UTC + 0530
 L: LOW PRESSURE AREA
 WML: WELL MARKED LOW PRESSURE AREA
 D: DEPRESSION (17-27 KT)
 DD: DEEP DEPRESSION (28-33 KT)
 CS: CYCLONIC STORM (34-47 KT)
 SCS: SEVERE CYCLONIC STORM (48-63KT)
 VSCS: VERY SEVERE CYCLONIC STORM (64-89 KT)
 ESCS: EXTREMELY SEVERE CYCLONIC STORM (90-119 KT)
 SuCS: SUPER CYCLONIC STORM \geq 120 KT


1KT=1.85 KMPH

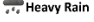
- LESS THAN 34 KT
- 34-47 KT
- \geq 48 KT
- OBSERVED TRACK
- FORECAST TRACK
- CONE OF UNCERTAINTY


Weather Warnings Graphics







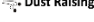
 Fog


 Heavy Rain

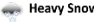
 Very Heavy Rain

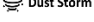
 Extremely Heavy Rain


 Thunder & Lightning


 Hailstorm


 Dust Raising Winds

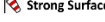
 Heavy Snow


 Dust Storm


 Heat Wave


 Warm Night

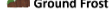
 Hot Day

 Hot & Humid

 Strong Surface Winds

 Cold Wave

 Cold Day

 Ground Frost

COLOUR CODED WARNING

No Warning (No Action)

Watch (Be Aware)

Alert (Be Prepared To Take Action)

Warning (Take Action)

Probabilistic Forecast

Terms	Probability of Occurrence (%)
Unlikely	< 25
Likely	25 - 50
Very Likely	50 - 75
Most Likely	> 75

* Red colour warning does not mean "Red Alert", Red colour warning means "Take Action".
Forecast and Warning for any day is valid from 0630 hours IST of day till 0630 hours IST of next day.
For more details, kindly visit <https://mausam.india.gov.in> or contact: 011-2434-4599
(Service to the Nation since 1875)

Flash Flood Guidance

24 hours Outlook for the Flash Flood Risk (FFR) till 1730 IST of 27-07-2025 :

Low to Moderate flash flood risk likely over few watersheds & neighbourhoods of following Met Sub-divisions during next 24 hours.

East Rajasthan - Banswara, Baran, Dungarpur, Jhalawar, Kota and Udaipur districts.

East Madhya Pradesh - Anuppur, Balaghat, Chhatarpur, Chhindwara, Damoh, Dindori, Katni, Mandla, Narshimpura, Panna, Sagar, Seoni and Tikamgarh districts.

West Madhya Pradesh - Agar-Malwa, Alirajpur, Ashoknagar, Barwani, Bhopal, Burhanpur, Dhar, Guna, Jhabua, Khandwa, Khargone, Mandsaur, Nimach, Raisen, Rajgarh, Shivpuri, Videsha and Narmadapuram districts.

Vidarbha - Akola, Amarvati, Buldhana districts.

Marathwada- Aurangabad, Jalna districts.

24 hours Outlook for the Flash Flood Risk (FFR) till 1730 IST of 27-07-2025 :

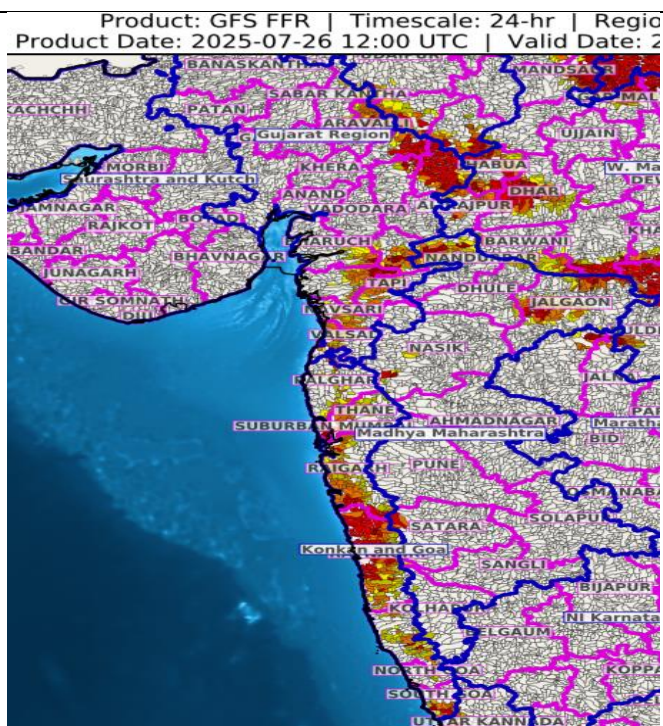
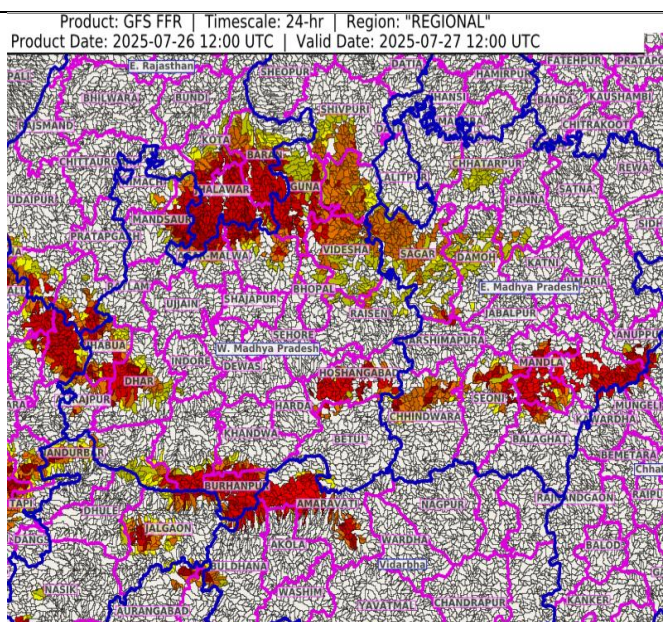
Low to Moderate flash flood risk likely over few watersheds & neighbourhoods of following Met Sub-divisions during next 24 hours.

Gujarat Region - Daman, Aravalli, Bharuch, Dahod, Dangs, Mahisagar, Narmada, Navsari, Panchmahal, Sabar Kantha, Surat, Tapi, Vadodara and Valsad districts.

Konkan & Goa - North Goa, South Goa, Mumbai City, Palghar, Raigarh, Ratnagiri, Sindhudurg, Suburban Mumbai and Thane districts.

Madhya Maharashtra - Dhule, Jalgaon, Nandurbar, Nasik, Pune and Satara districts.

Surface runoff/ Inundation may occur at some fully saturated soils & low-lying areas over Area of Concern (AoC) as shown in map due to expected rainfall occurrence in next 24 hours.



Flash Flood Threat

High Threat (Take Action)

Moderate threat (Be Prepared)

Low Threat (Be Updated)

Flash Flood Risk

High Risk (Take Action)

Moderate Risk (Be Prepared)

Low Risk (Be Updated)

Annexure-I

Rainfall (in cm) accumulated from 0830 hrs IST to 1730 hours IST of today, the 26th July:

Madhya Maharashtra: Mahabaleshwar 7;

Marathwada: Parbhani 7, Udgir 4, Chhatrapati Sambhajinagar 3;

Gangetic West Bengal: Asansol, Canning, Diamond Harbour 2 each,

East Rajasthan: Raipur 7, Ajmer 3;

West Rajasthan: Jodhpur 2;

Gujarat Region: Valsad 8, Daman 2;

West Uttar Pradesh: Orai 3, Jhansi 2;

East Madhya Pradesh: Satna, Narsinghpur 4 each, Nowgong, Tikamgarh 2 each;

West Madhya Pradesh: Indore, Ratlam 4 each, Ujjain 3;

Vidarbha: Sonegaon 3; Telangana: Nizamabad 2;

Konkan & Goa: Matheran 3;